

EFFECT OF DIFFERENT COLOURED BAGGING ON POSTHARVEST
QUALITY OF SABA BANANA FRUITS

LIEW PHUI RONG

PERPUSTAKAAN
UNIVERSITI MALAYSIA SABAH

DISSERTATION SUBMITTED IN PARTIAL FULFILMENT OF THE
REQUIREMENTS FOR THE DEGREE OF BACHELOR OF
AGRICULTURE SCIENCE WITH HONOURS

CROP PRODUCTION PROGRAMME
FACULTY OF SUSTAINABLE AGRICULTURE
UNIVERSITI MALAYSIA SABAH
2017



UMS
UNIVERSITI MALAYSIA SABAH

UNIVERSITI MALAYSIA SABAH

BORANG PENGESAHAN TESIS

JUDUL: EFFECT OF DIFFERENT COLOURED BAGGING ON POSTHARVEST QUALITY OF SABA BANANA FRUITS

LAJAZAH: Bachelor of Agriculture Science with Honours (Crop Production)

SAYA: LIEW PHUI RONG SESI PENGAJIAN: Semester 1 2016/2017
(HURUF BESAR)

Mengaku membenarkan tesis *(LPSM/Sarjana/Doktor Falsafah) ini disimpan di Perpustakaan Universiti Malaysia Sabah dengan syarat-syarat kegunaan seperti berikut:-

1. Tesis adalah hak milik Universiti Malaysia Sabah.
2. Perpustakaan Universiti Malaysia Sabah dibenarkan membuat salinan untuk tujuan pengajian sahaja.
3. Perpustakaan dibenarkan membuat salinan tesis ini sebagai bahan pertukaran antara Institusi pengajian tinggi.
4. Sila tandakan (/)

☐

SULIT

(Mengandungi maklumat yang berdarjah keselamatan atau kepentingan Malaysia seperti yang termaktub di AKTA RAHSIA RASMI 1972)

☐

TERHAD

(Mengandungi maklumat TERHAD yang telah ditentukan oleh organisasi/badan di mana penyelidikan dijalankan)

☒

TIDAK TERHAD

LIEW PHUI RONG.

(TANDATANGAN PENULIS)

Alamat Tetap: W. D. T. 303
90009 SANDAKAN,
SABAH.

TARIKH: 13. 01. 2017

Disahkan oleh:

MURULAIN BINTI ISMAIL
PUSTAKAWAN KANAN
UNIVERSITI MALAYSIA SABAH
(TANDATANGAN PUSTAKAWAN)

Dr. Jupikely James Silip

(NAMA PENYELIA)

TARIKH: 13. 01. 2017

Catatan:

*Potong yang tidak berkenaan.

*Jika tesis ini SULIT dan TERHAD, sila lampirkan surat daripada pihak berkuasa/organisasi berkenaan dengan menyatakan sekali sebab dan tempoh tesis ini perlu dikelaskan sebagai SULIT dan TERHAD.

*Tesis dimaksudkan sebagai tesis bagi Ijazah Doktor Falsafah dan Sarjana Secara Penyelidikan atau disertai bagi pengajian secara kerja kursus dan Laporan Projek Sarjana Muda (LPSM).



UMS
UNIVERSITI MALAYSIA SABAH

PERPUSTAKAAN
UNIVERSITI MALAYSIA SABAH

DECLARATION

I hereby declare that this dissertation is based on my original work except for citations and quotations which have been duly acknowledged. I also declare that no part of this dissertation has been previously or concurrently submitted for a degree at this or any other university.




PHUI
RONG.

LIEW PHUI RONG
BR13110079
13.01.2017

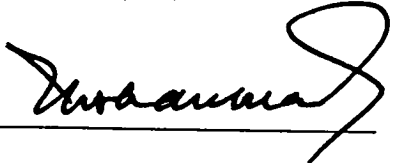
VERIFIED BY

1. Dr. Jupikely James Silip
SUPERVISOR



DR. JUPIKELY JAMES SILIP
SENIOR LECTURER / ACADEMIC ADVISOR
SCHOOL OF SUSTAINABLE AGRICULTURE
UNIVERSITI MALAYSIA SABAH

2. Professor Dr. Mohammad bin Mohd. Lassim
CO-SUPERVISOR



PROF. DR. MOHAMMAD BIN MOHD. LASSIM
PENSYARAH
FAKULTI PERTANIAN LESTARI
UMS KAMPUS SANDAKAN

ACKNOWLEDGEMENT

First and foremost, I would like to express my deepest appreciation to my supervisor and co-supervisor, Dr. Jupikely James Silip and Professor Dr. Mohammad Bin Mohd Lassim, who has the passion and patience in guiding me to the completion of this thesis. Without their guidance and advices this thesis would not have been possible.

I would also like to thank Puan Nurul Syakina, the laboratory assistant for willing to lend out a hand to help me whenever I faced problems on the insufficiency of laboratory equipment, instruments and also chemicals required for carrying out my experiment.

Last but not least, I also wanted to thank Encik Matthunjan Upin and staff of Field Administrative Office for their willingness to help me in carrying out my experiment in banana plot. They did assist me a lot in my experiment especially during the bagging and harvesting of banana bunches.

ABSTRACT

The study was carried out in the banana plot of Faculty of Sustainable Agriculture, Universiti Malaysia Sabah, to evaluate the effect of different coloured bunch bagging on the physico-chemical quality of 'Saba' banana fruits. The bunch covers used were blue, white, black in colours, and no cover as a control arranged in randomised complete block design (RCBD) with three replications. Bunch covers were applied when the banana fingers had started to turn upwards. Fruits were harvested at "full three-quarters" maturity. Parameters measured were colour, finger length and girth, weight loss, pulp to peel ratio, pulp firmness, moisture content, total soluble solids (TSS), pH and titratable acidity (TA). Data were subjected to analysis of variance (ANOVA) using SAS statistical programme. The means were compared using least significant difference (LSD) at significance level of 5%. Results showed that bunch covers did significantly affect finger length, colour, weight loss, pulp moisture content, TSS and pH. However, it did not significantly influence finger girth, pulp to peel ratio, pulp firmness, peel moisture content and TA significantly. Between, 'Saba' banana bagged with black perforated bunch cover showed larger fruit size, brighter peel colour, low weight loss, low TSS content and high acidity level. Moreover, in course of banana fruit ripening, the weight loss, pulp to peel ratio, pulp moisture content, TSS and TA were increased as ripening progressed. In contrast, the pulp firmness, peel moisture content and pH were decreased over the ripening period. Based on the results of the study, it can, thus, be concluded that 'Saba' banana production was not suitable to be bagged with bunch cover due to the local hot and humid climatic condition in a tropical country.

KESAN KEPELBAGAIAN WARNA PEMBUNGKUSAN PADA KUALITI LEPAS TUAI PISANG SABA

ABSTRAK

Kajian ini telah dijalankan di plot pisang Fakulti Pertanian Lestari, Universiti Malaysia Sabah, untuk menilai kesan kepelbagaian warna pembungkusan pada fiziko-kimia kualiti pisang 'Saba'. Pembungkusan yang digunakan adalah dalam warna biru, putih, hitam dan tiada pembungkusan sebagai kawalan yang disusun dalam rawak reka bentuk block lengkap dengan tiga ulangan. Pembungkusan diletakkan apabila jari pisang telah mula menunjuk ke atas. Buah dituai pada "tiga-suku penuh" matang. Parameter yang diukur adalah warna, panjang jari dan ukur lilit, penurunan berat badan, nisbah isi ke kulit, ketegasan pulpa, kandungan kelembapan, jumlah pepejal larut (TSS), pH dan keasidan (TA). Data tertakluk kepada analisis varians (ANOVA) menggunakan program statistik SAS. Min dibandingkan dengan menggunakan *least significant difference* (LSD) pada aras keertian 5%. Hasil kajian menunjukkan bahawa pembungkusan mempengaruhi panjang jari, warna, penurunan berat badan, kandungan kelembapan pulpa, jumlah pepejal larut (TSS) dan pH. Walaubagaimanapun, pembungkusan tidak mempengaruhi lilitan jari, nisbah isi ke kulit, ketegasan pulpa, kandungan kelembapan kulit dan TA dengan ketara. Antaranya, pisang 'Saba' yang dibalut dengan pembungkusan hitam berlubang menunjukkan saiz yang besar, warna kulit cerah, penurunan berat badan yang rendah, kandungan TSS yang rendah dan tahap keasidan yang tinggi. Selain itu, pada masa buah pisang masak, kehilangan berat badan, nisbah isi ke kulit, kandungan kelembapan pulpa, TSS dan TA telah meningkat selama buah kematangan berlangsung. Sebaliknya, ketegasan pulpa, kandungan kelembapan kulit dan pH telah menurun dalam tempoh masak itu. Berdasarkan hasil kajian, kajian ini boleh disimpulkan bahawa pengeluaran pisang 'Saba' tidak sesuai untuk dibalut dengan pembungkusan kerana keadaan iklim yang panas dan lembap di negara tropika.

TABLE OF CONTENTS

Content	Page
DECLARATION	ii
VERIFICATION	iii
ACKNOWLEDGEMENT	iv
ABSTRACT	v
<i>ABSTRAK</i>	vi
TABLE OF CONTENTS	vii-viii
LIST OF TABLES	ix
LIST OF FIGURES	x-xi
LIST OF SYMBOLS, UNITS AND ABBREVIATIONS	xii
LIST OF FORMULA	xiii
 CHAPTER 1 INTRODUCTION	
1.1 Introduction	1-3
1.2 Justification	3-4
1.3 Research Objective	4
1.4 Hypotheses	4
 CHAPTER 2 LITERATURE REVIEW	
2.1 Banana (<i>Musa</i> spp.)	5
2.1.1 Taxonomic Classification	6-8
2.1.2 Botanical Description of a Banana Plant	8-9
2.1.3 Fruit Structure and Morphology	10
2.1.4 Nutritional Value and Uses	11
2.2 'Saba' Banana (<i>Musa</i> BBB 'Saba')	12
2.3 Factors that Influence the Postharvest Quality of Banana	12-13
2.3.1 Preharvest Factors	13-16
2.3.1.1 Climatic Conditions	16
2.3.1.2 Cultural Practices	16-18
2.3.2 Harvesting Factors	19
2.3.2.1 Maturity at Harvest	20-21
2.3.2.2 Harvesting Method	22
2.3.3 Postharvest Storage	22-23
2.4 Bagging Technology of Banana	24-25
2.4.1 Types of Bunch Cover	25-26
2.5 The Effects of Bagging on Fruit Quality of Banana	27
2.5.1 Preharvest Quality	27
2.5.1.1 Fruit Size	28-29
2.5.1.2 Fruit Colour	29
2.5.2 Postharvest Quality	29-30
2.5.2.1 Fruit Weight Loss	31
2.5.2.2 Pulp to Peel Ratio	
2.5.2.3 Pulp Firmness	
2.5.2.4 Peel and Pulp Moisture Content	
2.5.2.5 Total Soluble Solids (TSS)	
2.5.2.6 pH and Titratable Acidity (TA)	

Chapter 3 Methodology	
3.1 Experimental Sites	32
3.2 Experimental Materials	32-33
3.3 Bunch Tagging and Bagging	33
3.4 Bunch Harvesting and Sample Preparation	34
3.5 Treatment and Experimental Design	34
3.6 Data Collection	35
3.6.1 Fruit Colour	35
3.6.2 Fruit Size	36
3.6.3 Fruit Weight Loss	36
3.6.4 Pulp to Peel Ratio	37
3.6.5 Pulp Firmness	37
3.6.6 Peel and Pulp Moisture Content	37-38
3.6.7 Total Soluble Solids	38
3.6.8 pH and Titratable Acidity	39
3.7 Statistical Analysis	39
CHAPTER 4 RESULTS	
4.1 Effects of Different Coloured Bagging on On-Tree Physical Changes of 'Saba' Banana during Maturation	40
4.1.1 Fruit Length	40-41
4.1.2 Fruit Girth	41-42
4.1.3 Fruit Colour	42-43
4.2 Effect of Different Coloured Bagging on Off-Tree Physico-Chemical Changes of 'Saba' Banana during Ripening	44
4.2.1 Fruit Weight Loss	44-46
4.2.2 Pulp to Peel Ratio	47
4.2.3 Pulp Firmness	48
4.2.4 Peel and Pulp Moisture Content	49-50
4.2.5 Total Soluble Solids	51-52
4.2.6 pH	52-53
4.2.7 Titratable Acidity	54
CHAPTER 5 DISCUSSION	
5.1 Influence of Bagging on Fruit Length and Girth	55
5.2 Influence of Bagging on Fruit Colour	56-57
5.3 Influence of Bagging on Fruit Weight Loss	57
5.4 Influence of Bagging on Pulp to Peel Ratio	58
5.5 Influence of Bagging on Pulp Firmness	58-59
5.6 Influence of Bagging on Peel and Pulp Moisture Content	59
5.7 Influence of Bagging on Total Soluble Solids	60
5.8 Influence of Bagging on pH and Titratable Acidity	60-61
CHAPTER 6 CONCLUSION AND RECOMMENDATIONS	62-63
REFERENCES	64-71
APPENDICES	72

LIST OF TABLES

Table		Page
4.1	The effect of different coloured bunch covers on the fruit length (cm), girth (cm) and colour (L^* , C^* , h°) of 'Saba' banana fruits	41
4.2	The effect of bagging and maturity index on the weight loss (%), pulp to peel ratio, pulp firmness (N), peel and pulp moisture content (%), TSS ($^\circ\text{B}$), pH and TA (%) of 'Saba' banana fruits	45

LIST OF FIGURES

Figure	Page
2.1 Morphological characteristics of a banana plant	7
2.2 A developing bunch of typical banana	8
2.3 Diagrammatic representation of the banana in finger	9
2.4 Changes in size and shape of banana fruit of distinct genomic groups (AAA, AAB, BBB) at various stages of maturity	18
4.1 Mean fruit length of 'Saba' banana over 13 weeks of growth and maturation in field which was bagged with different coloured bunch covers. Figure with different letter(s) show significant difference ($P \leq 0.05$) as determined by Least Significant Difference test	41
4.2 Mean lightness of 'Saba' banana over 13 weeks of growth and maturation in field which was bagged with different coloured bunch covers. Figure with different letter(s) show significant difference ($P \leq 0.05$) as determined by Least Significant Difference test	42
4.3 Mean chroma of 'Saba' banana over 13 weeks of growth and maturation in field which was bagged with different coloured bunch covers. Figure with different letter(s) show significant difference ($P \leq 0.05$) as determined by Least Significant Difference test	43
4.4 Mean hue angle of 'Saba' banana over 13 weeks of growth and maturation in field which was bagged with different coloured bunch covers. Figure with different letter(s) show significant difference ($P \leq 0.05$) as determined by Least Significant Difference test	43
4.5 Mean percentage of weight loss of 'Saba' banana fruit as affected by different coloured bunch covers. Figure with different letter(s) show Significant difference ($P \leq 0.05$) as determined by Least Significant Difference test	46
4.6 Mean percentage of weight loss of 'Saba' banana fruit as affected by different levels of maturity index. Figure with different letter(s) show significant difference ($P \leq 0.05$) as determined by Least Significant Difference test	46

4.7	Mean pulp to peel ratio of 'Saba' banana fruit as affected by different levels of maturity index. Figure with different letter(s) show significant difference ($P \leq 0.05$) as determined by Least Significant Difference test	47
4.8	Mean pulp firmness of 'Saba' banana fruit as affected by different levels of maturity index. Figure with different letter(s) show significant difference ($P \leq 0.05$) as determined by Least Significant Difference test	48
4.9	Mean percentage of pulp moisture content of 'Saba' banana fruit as affected by different coloured bunch covers. Figure with different letter(s) show significant difference ($P \leq 0.05$) as determined by Least Significant Difference test	50
4.10	Mean moisture content percentage of both peel and pulp of 'Saba' banana fruit as affected by different levels of maturity index. Figure with different letter(s) show significant difference ($P \leq 0.05$) as determined by Least Significant Difference test	50
4.11	Mean total soluble solids content of 'Saba' banana fruit as affected by different coloured bunch covers. Figure with different letter(s) show significant difference ($P \leq 0.05$) as determined by Least Significant Difference test	51
4.12	Mean total soluble solids content of 'Saba' banana fruit as affected by different levels of maturity index. Figure with different letter(s) show significant difference ($P \leq 0.05$) as determined by Least Significant Difference test	52
4.13	Mean pH of 'Saba' banana fruit as affected by different coloured bunch covers. Figure with different letter(s) show significant difference ($P \leq 0.05$) as determined by Least Significant Difference test	53
4.14	Mean pH of 'Saba' banana fruit as affected by different levels of maturity index. Figure with different letter(s) show significant difference ($P \leq 0.05$) as determined by Least Significant Difference test	53
4.15	Mean titratable acidity of 'Saba' banana fruit as affected by different levels of maturity index. Figure with different letter(s) show significant difference ($P \leq 0.05$) as determined by Least Significant Difference test	54

LIST OF SYMBOLS, UNITS AND ABBREVIATIONS

±	Plus Minus
°B	Degree Brix
cv.	Cultivated Variety
L*	Lightness
C*	Chroma
h°	Hue Angle
mg	milligram
N	Newton
nm	nanometre
µm	micrometre
ANOVA	Analysis of Variance
FSA	Faculty of Sustainable Agriculture
LSD	Least Significant Differences
RCBD	Randomised Complete Block Design
SAS	Statistical Analysis System
TA	Titrateable Acidity
TSS	Total Soluble Solids

LIST OF FORMULAE

Formula	Page
<p>3.1 Percentage of weight loss (WL)</p> $WL (\%) = \frac{W_1 - W_2}{W_1} \times 100$ <p>W₁ = initial weight of fruit (g); W₂ = final weight of fruit (g)</p>	36
<p>3.2 Pulp to peel ratio</p> $\text{Pulp/peel ratio} = \frac{\text{Pulp weight (g)}}{\text{Peel weight (g)}}$	37
<p>3.3 Percentage of moisture content (MC)</p> $MC (\%) = \frac{D - E}{D} \times 100$ <p>D = weight of wet sample (g); E = weight of dry sample (g)</p>	38
<p>3.4 Percentage of titratable acidity (TA)</p> $TA (\%) = \frac{\text{Titre (ml)} \times \text{Normality of NaOH (0.1 N)} \times \text{volume made up (180 ml)} \times 64 \text{ g} \times 100}{\text{Sample volume (25 ml)} \times \text{sample weight (60 g)} \times 100}$	39

CHAPTER 1

INTRODUCTION

1.1 Introduction

Banana is a large perennial herbal plant from a genus *Musa* with extraordinary significance to human societies. They are the fourth most important food crop in the world after rice, wheat and maize (Nelson *et al.*, 2006) and the second most important fruit crop after durian in Malaysia (Nik Hassan, 2003). Banana are grown in more than 150 countries in the world with the world acreage of 5,007,520 hectares, while the world production was 1,036,323,349 metric tonnes and productivity was 20.7 metric tonnes per hectare during the year of 2012 to 2013 (DAC, 2015).

In Malaysia, banana (*Musa* spp.) ranked second in terms of production area covered up to 29,790 hectares with annual production of 294,530 metric tonnes valued at about US\$24 million in the year of 2010. There is 15% of the banana produced in a year are exported to Singapore, Brunei, Hong Kong and Middle East valued at more than US\$10 million with large proportion of the produces were consumed locally (MARDI, 2011).

'Saba' banana (*Musa balbisiana* cv. Nipah) is the popular banana used in cookery especially in Philippines with its fruit cooked into popular snack foods and the male bud eaten as a vegetable in Filipino dishes. 'Saba' is the common name of this variety in Philippines, synonymous with 'Pisang Nipah' in Malaysia, 'Pisang Kepok' in Indonesia and

'Kluai Hin' in Thailand. 'Saba' banana is a perennial fruit crop under the family of Musaceae with the plant height reach to 4.5 to 5.0 meter at its maximum growth stage (Valmayor *et al.*, 2002).

'Saba' banana is the most important banana cultivar in Philippines with the highest nutritional content among other cultivars due to its deeper root system which allow them to absorb more nutrient from the soil (Health Tips and Natural Healing Benefits, 2012). It is proofed by their long and big girth pseudostem as well as the fruit finger dimension range from 10 to 15 cm in length and 3 to 5 cm in width (Fatimah Corazon *et al.*, 2011). The health benefits of 'Saba' banana include the regulation of circulatory system, source of natural energy, stop constipation, reduce hangover, help to quit smoking and minimize menstrual pains and prevent and treat ulcers (Health Tips and Natural Healing Benefits, 2012).

In under-developed and developing tropical countries, postharvest losses of agricultural products has occurred both quantitatively and qualitatively at all stages from harvesting, through handling, storage, processing, packaging, transportation and marketing until crops are delivered to the final consumers (Olayemi *et al.*, 2012). In such case, the growers are often forced to dispose off their produce over a short period of time (Haidar and Demisse, 1999; Tigist *et al.*, 2011) due to the rain-fed farming system, lack of storage facilities, and limited access to transportation have resulted an economic loss of fruits. Hence, an emphasis to postharvest handling of the fruit is important in order to eliminate any postharvest losses of agricultural products as well as to boost food security and food availability in these countries (Mrema and Rolle, 2002).

Fruit bagging during the production stage in field is the key practice to reduce postharvest losses of banana fruits after harvest. Banana bunch covers ranges from varieties of materials such as polyethylene bag, jute cloth, newspaper, paper bag and available in different thickness and colour in either single or combined-coloured form. Banana bagging is done basically to protect banana fruits from physical injury, sun-burn, leaf scratch, dust and insects during fruit growth and development (Elkashif *et al.*, 2010). Besides of the physical appearance, bunch bagging is also aimed to enhance fruit size,

quality and yield of banana with maximum development of physical and chemical characteristics under cover protection such as fruit weight and sugar content.

Throughout the world, there is increasing concern in the important role played by pre-harvest production practices in the prevention of fruit losses from postharvest chain. Technology such as bunch covering that enhance banana production has not been extensively practiced in Malaysia. Therefore, this study was aimed at the investigation of the effectiveness of different pre bagging materials in enhancing pre- and post-harvest quality of 'Saba' banana.

1.2 Justification

The present study was conducted to evaluate the physical and chemical qualities of 'Saba' banana (*Musa balbisiana* cv. Nipah) during growth and development in the field and also in the postharvest stage at each maturity index throughout the ripening period. 'Saba' banana was chosen for the current study due to its high nutritive value at which it is a rich source of carbohydrate, vitamin B particularly vitamin B6, minerals, potassium and fiber (Robinson and Sauco, 2011). In fact, it is the popular variety in Malaysia favoured by local residents to use in preparing fritters or locally known as 'Pisang Goreng' as the popular snake food in daily life hence it is easily available for this study.

'Saba' banana has long been present in Malaysia, but it had not been planted as the major cultivated varieties in local banana plantations. In fact, 'Saba' banana is claimed to have high resistance to banana bunchy top virus (BBTV) and black sigatoka diseases (dela Cruz *et al.*, 2008). It deserves more attention from the agriculturists. Besides that, there are limited information regarding postharvest quality of 'Saba' banana as influenced by bunch bagging practice have been published as majority of the studies had done their research on dessert banana especially 'Cavendish'.

Therefore, this research was carried out to evaluate the physical and chemical qualities of 'Saba' banana bagged with different coloured of perforated bunch covers at

each maturity index of fruit. Through this research, the information related to the postharvest quality of 'Saba' banana can be greatly increased. We would be able to know the benefits of postharvest technology on the quality and quantity of banana fruit and hence it can be exported to global market followed by the possible increasing market demand in the future.

1.3 Research Objective

The objective of this research study was to evaluate the effect of different coloured polyethylene bags on the physico-chemical quality of 'Saba' banana (*Musa balbisiana* cv. Nipah).

1.4 Hypotheses

H₀₁: Bagging of banana fruit bunches have no effects on the preharvest and postharvest quality of 'Saba' banana.

H_{A1}: Bagging of banana fruit bunches have effects on the preharvest and postharvest quality of 'Saba' banana.

H₀₂: Different coloured bags have no effects on the preharvest and postharvest quality of 'Saba' banana.

H_{A2}: Different coloured bags have effects on the preharvest and postharvest quality of 'Saba' banana.

CHAPTER 2

LITERATURE REVIEW

2.1 Banana (*Musa* spp.)

2.1.1 Taxonomic Classification

Bananas with all its species, varieties or hybrids belong to the family Musaceae which comprised of three genera groups, namely *Musa*, *Ensete* and *Musella*. *Musa* is the most diversified, most ancient and widely distributed group of genus (Karamura, 1998) encompassed a wide diversity of wild and cultivated varieties. Modern edible bananas that grow abundantly nowadays originally came from two wild seeded species, which are *Musa acuminata* Colla (A genome) and *Musa balbisiana* Colla (B genome) (Robinson and Sauco, 2011).

From the natural hybridisation occurred between these two diploid species, various genomic groups have been produced and they were classified according to the method described by Simmonds and Shepherd (1955). It is first, based on the relative contribution of genes A and B from both parents to the constitution of cultivar, and second, to the ploidy or chromosome number of the cultivar. For examples, the clones produced could be pure *acuminata* or *balbisiana* in diploid or triploid derivatives such as AA/BB and AAA/BBB, or hybrids of the two wild species in diploid (AB), triploid (AAB/ABB) or tetraploid (ABBB) (Abdullah Hassan and Pantastico, 1990).



2.1.2 Botanical Description of a Banana Plant

Banana (*Musa* spp.) is a monocotyledonous, giant herbaceous and evergreen perennial plant with complete morphological characteristics. It consists of a compressed, modified stem technically known as a rhizome that bears developing suckers. Besides that, banana plant possess an adventitious root system, a pseudostem (false stem), a crown of large pinnate-veined leaves and an inflorescence that bear flowers which later develops into fruit that we commonly known as banana. In fact, *Musa* species do contained seeds which appear as tiny black specks in the middle of fruit finger (Goncalves and Kernaghan, 2014). However, these seeds are considerably not viable in nature, which in turn contributed to the wide adoptive multiplication of banana through vegetative processes.

The natural growth cycle of banana plant starts from the sucker (shoot) that appears at the ground level alongside with the mother plant. The sucker is growing up simultaneously with mother plant, producing more new leaves, flowering, and ultimately developing a banana bunch. After the bunch is harvested, the aerial portions of plant particularly the banana leaves dry up and die down to the ground. The sucker ("the daughter") which already existed next to the mother plant, replacing the dead tree, and thus maintaining the process on a continuous basis. The whole cycle, from the appearance of the sucker at the ground level until the harvesting of the bunch takes approximately one year of time depending on the variety and the growing conditions.

When the banana tree entered into reproductive phase, a large bullet-shaped inflorescence started to emerge from the centre of the crown of leaves. The immature inflorescence is encased inside purple bracts with 5 to 15 double whorls of floral parts attached on each node of the stout peduncle and arranged in a spiral manner. The inflorescence is classed as a compound spike with the female flowers occurred at the proximal end (closet to the base of the peduncle), male flowers at the distal end (closet to the tip of the peduncle), and sometimes with neuter or hermaphrodite flowers present in between them (Purseglove, 1972).

As the bunch develops, the bracts open in sequence from base to tip, fall off and revealing the developing fruit. The female flowers are developed into edible fruit at which the doubled-rows fruits are called hands while the individual fruit itself called a finger. The entire collection of fruit hands is known as a bunch. In the meantime, the male flowers below the developing fruit shed, leaving a callus scar on the peduncle except for the tip of the stalk, which consists of a 'male bud' that often referred to as the "bell" containing the last-formed male bracts and flowers. It usually will be cut off and removed from the developing bunch to yield better fruit quality and quantity.

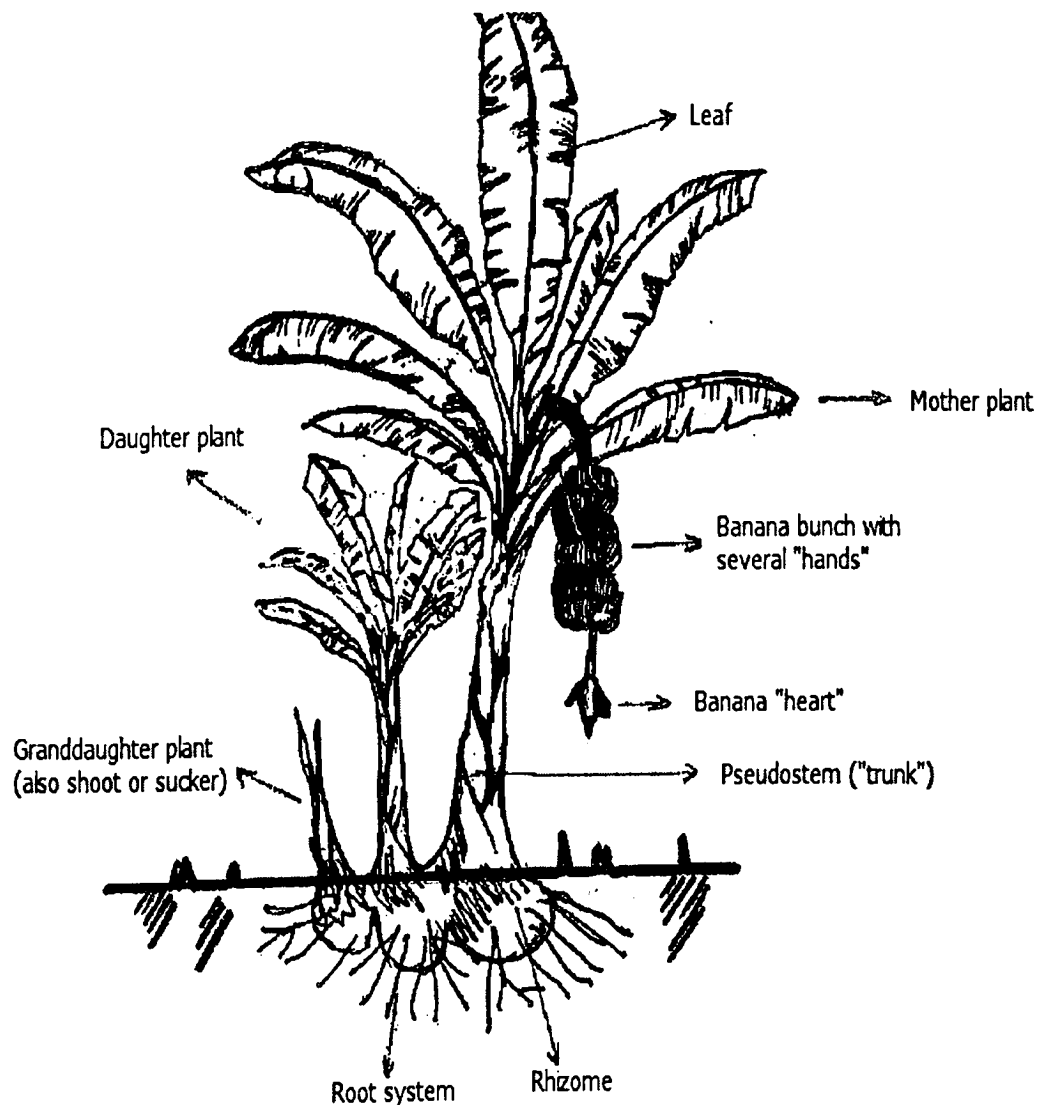


Figure 2.1 Morphological characteristics of a banana plant
Source: EPAGRI, 2002

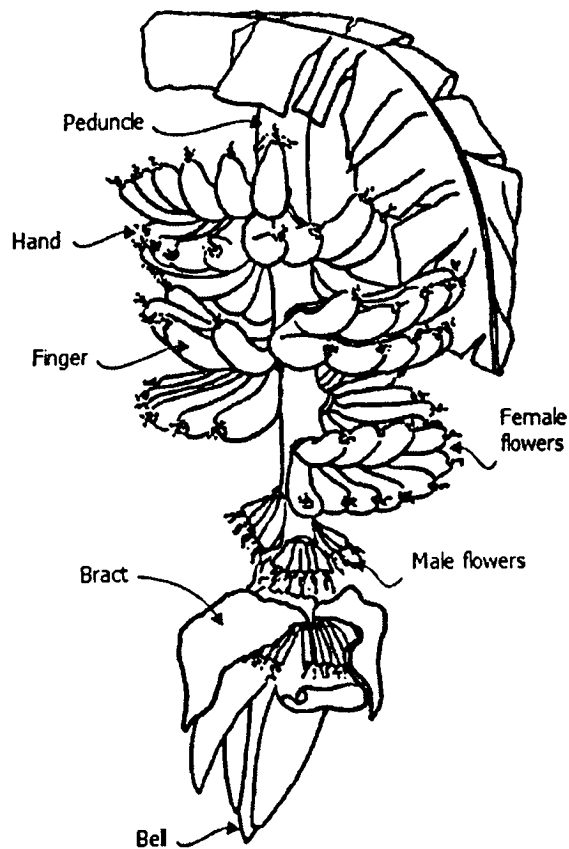


Figure 2.2 A developing bunch of typical banana
Source: Broadley *et al.*, 2004

2.1.3 Fruit Structure and Morphology

The banana fruit, despite originating from an inferior ovary of the female flower, can be botanically characterised as a type of berry with a rind that can be easily peeled off from the fleshy pulp. The rind is an outer protective layer of each fruit finger, commonly known as the “skin” or “peel”, is a fusion of the floral receptacle and the exocarp of the pericarp. The exocarp is referring to the epidermis which consists of a single layer of cells with stomata and a well-defined cuticle on the outer surface. Below the epidermis, there are 6 to 11 photosynthetic layers (Israeli and Lahav, 1986) that contain chloroplasts which gives the peel green in colour.

The innermost layer of the pericarp, the intertissue strands, contain the pulp-initiating cells that gives way when the ripe banana is peeled. The mesocarp forms the

pulp while the endocarp is limited to the inner epithelium adjacent to the ovarian cavity. In case of edible bananas, they are vegetatively parthenocarpic in that they develop a mass of edible sweetish pulp without pollination unlike the wild seeded bananas which form a dense of hard black seeds resulted from fertilisation (non-parthenocarpic).

The ovules in edible bananas are thus shrivel earlier but may recognisable in mature fruit as minute brown or black patches embedded in the middle of edible pulp. In addition, a characteristic calloused scar at the tip of the fruit is resulted from the abscission of tepals, style and staminodes during the development of fruit from the ovary (OGTR, 2008). Meanwhile, the corresponding end of fruit finger carrying a short pedicel which serves as an attachment point to the crown of the fruit hand.

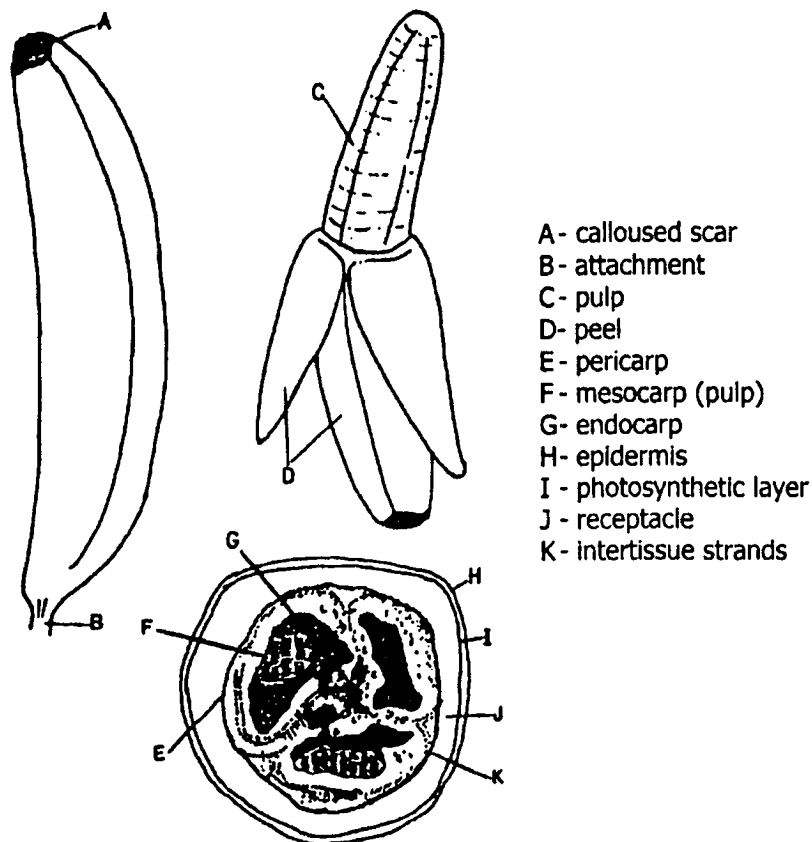


Figure 2.3 Diagrammatic representation of the banana in finger
Source: Abdullah Hassan and Pantastico, 1990

2.1.4 Nutritional Value and Uses

Banana, cooking banana and plantain (*Musa* spp.) are energy-rich fruits with high nutritional value than other common tropical and subtropical fruits such as mango, papaya and orange (Samson, 1980; Morton, 1987). Bananas have become popular in modern westernised diets for their flavour, texture and convenience value, being easy to peel and eat. It is a good source of vitamin A, C and B particularly vitamin B6 (Robinson and Sauco, 2011) which make a significant contribution to the daily dietary requirement of an adult. Besides that, bananas are high in fibre and rich in potassium (K) at which an average-sized banana had 450 to 467 mg of potassium (Lee, 2008).

Dessert banana is commonly used as supplementary snack food as it can be consumed fresh after peeling but plantain and cooking banana are often eaten unripe which used to serve in major part of meal or even in a whole meal. Dessert banana is a good source of energy as it contains high carbohydrate in the fruit pulp. The therapeutic values of dessert banana have been recognised in many special diets such as controlling high blood pressure and heart diseases as it is low in sodium and free from cholesterol.

In addition, the low lipid and high palatability properties of banana makes it become the ideal diet for obese and elderly people. The ripe mashed banana is always the recommended first solid food for babies (Ogazi, 1996) due to easy digestibility and the excellent mineral and vitamin content. It is also eaten by athlete during sport competition as an immediate source of energy.

Meanwhile, plantain has a lower sugar content but high nutritive value especially provitamin A carotenoids which are important in enhancing nutritional status while preventing cancer and other human diseases (Ngoh Newilah *et al.*, 2009). Both the plantain fruits and green bananas rejected from fresh fruit market have been commercially processed into a wide variety of storable products. For examples, roasted plantain and sweets are derived from unripe plantains while banana flour and chips are prepared from green bananas (Poiani *et al.*, 2008). These processed food products can be stored for years as emergency foods in case of food scarcity and famine (Ogazi, 1996).

REFERENCES

- Abbasi, N. A., Chaudhary, M. A., Ali, M. I., Hussain, A. and Ali, I. 2014. On Tree Fruit Bagging Influences Quality of Guava Harvested at Different Maturity Stages during Summer. *International Journal of Agriculture and Biology* **16(3)**: 543-549
- Abdullah, H. and Pantastico, E. B. 1990. *Banana: Fruit Development, Postharvest Physiology, Handling and Marketing in ASEAN*. Kuala Lumpur: ASEAN Food Handling Bureau
- Abdullah, H., Rohaya, M. A. and Zaipun, M. Z. 1985. Physico-Chemical Changes during Maturation and After Ripening of Banana (*Musa sapientum* cv. Embun). MARDI Research Bulletin **13**: 341-347
- Abdullah, H. and Tirtosoekotjo, S. 1989. ASEAN Horticulture Produce Data Sheets, Kuala Lumpur: ASEAN Food Handling Bureau.
- Acedo, V. Z. and Pantastico, Er. B. 1989. The ASEAN Trade in Bananas. Unpublished.
- Ahmad, S., Thompson, A. K., Hafiz, I. A. and ASI, A. S. 2001. Effect of Temperature on the Ripening Behaviour and Quality of Banana Fruit. *International Journal of Agriculture and Biology* **3(2)**: 224-227
- Amarante, C., Banks, N. H. and Max, S. 2002. Effect of Preharvest Bagging on Fruit Quality and Postharvest Physiology of Pears (*Pyrus communis*). *New Zealand Journal of Crop and Horticultural Science* **30(2)**: 99-107
- Arakawa, O., Uematsu, N. and Nakajima, H. 1994. Effect of Bagging on Fruit Quality in Apples. *Bulletin of the Faculty of Agriculture, Hirosaki University* **57**: 25-32
- Bentley, W. J. and Viveros, M. 1992. Brown-Bagging 'Granny Smith' Apples on Trees Stops Codling Moth Damage. *California Agriculture* **46**: 30-32
- Berill, F. W. 1956. Bunch Covers for Bananas. *Queensland Agricultural Journal* **82**: 435-439
- Bhaktavathsalam, E. M., Manickavasakan, P., Kaliaperumal, T. T. 1968. Studies on the Control of Fruit Blemishes in Hindi Banana Virupashki. *South Indian Horticulture Journal* **16**: 7-13
- Bhande, S. D., Ravindra, M. R. and Goswami, T. K. 2008. Respiration Rate of Banana Fruit under Aerobic Conditions at Different Storage Temperatures. *Journal of Food Engineering* **87(1)**: 116-123
- Boncato, A. A. 1967. Effects of Reducing the Number of Hands in a Bunch of 'Lakatan' Banana. *Philipp J. Plant Ind.* **32**: 243-251
- Broadley, R., Chay-Prove, P., Rigden, P. and Daniells, J. 2004. Subtropical Banana Grower's Handbook. Department of Primary Industries Queensland, NSW Agriculture and Bananas NSW
- Broughton, W. J. and Wu, K. F. 1979. Storage Conditions and Ripening of Two Cultivars of Banana. *Scientia Horticulturae* **10(1)**: 83-93
- Burdon, J. N., Dori, S., Lomaniec, E., Marinansky, R. and Pesis, E. 1994. The Post-Harvest Ripening of Water Stressed Banana Fruits. *Horticultural Science* **69(5)**: 799-804
- Caussiol, L. 2001. Postharvest Quality of Conventionally and Organically Grown Banana Fruit. A Master Science Thesis presented to Cranfield University, Silsoe
- Chang, P. Y., Shuji, F., Ashrafuzzaman, M. D., Naoko, N. and Nobuyuki, H. 2000. Purification and Characterisation of Polyphenol Oxidase from Banana (*Musa sapientum* L.) Pulp. *Journal of Agricultural and Food Chemistry* **48**: 2732-2735
- Chen, C. S., Zhang, D., Wang, Y. Q., Li, P. M. and Ma, F. W. 2012. Effects of Fruit Bagging on the Contents of Phenolic Compounds in the Skin and Flesh of 'Golden Delicious', 'Red Delicious', and 'Royal Gala' Apples. *Scientia Horticulturae* **142**: 68-73

- Chen, D. and Li, P. 1999. Effect of Bagging on Fruit Colouration of Litchi (*Litchi chinensis* Sonn. cv. Feizixiao). *Journal of South China Agricultural University* **20**: 65-69
- Chonhenchob, V., Kamhangwong, D., Kruenate, J., Khongrat, K. Tangchantra, N., Wichai, U. and Singh, S. P. 2011. Pre-Harvest Bagging with Wavelength-Selective Materials Enhances Development and Quality of Mango (*Mangifera indica* L.) cv. Nam Dok Mai #4. *Journal of the Science of Food and Agriculture* **91**: 664-671
- Choudhury, H., Chandra, K. and Baruah, K. 1996. Effect of Bunch Cover on Morphological Parameters and Yield of Banana. Department of Crop Physiology, Assam Agricultural University, Jorhat -785013, India. *Advances in Plant Sciences* 9.
- CSIRO. 1972. *Banana Ripening Guide*. Sydney: Commonwealth Scientific and Industrial Research Organisation
- Cuneen, T. and McEntyre, C. 1988. Does the Colour of Banana Bags have an Effect on the Yield of Bananas and the Climate Inside the Bag? John Paul College, Coffs Harbour, New South Wales, Australia. *Banana Bulletin* 52, pp. 14-15
- DAC. 2015. Postharvest Profile of Banana: 2015. In Directorate of Marketing and Inspection. Nagpur.
- Dadzie, B. K. and Orchard, J. E. 1997. Routine Post-Harvest Screening of Banana/Plantain Hybrids: Criteria and Methods. INIBAP Technical Guidelines 2. International Plant Genetic Resources Institute, Rome; International Network for the Improvement of Banana and Plantain, Montpellier; Technical Centre for Agricultural and Rural Cooperation, Wageningen
- Daniells, J. W., O' Farrell, P. J., Mulder, J. C. and Campbell, S. J. 1987. Effects of Bunch Covering and Bunch Trimming on Bananas in Northern Queensland. *Queensland Journal of Agricultural Science* **44**: 101-105
- Debnath, S. and Mitra, S. K. 2008. Panicle Bagging for Maturity Regulation, Quality Improvement and Fruit Borer Management in Litchi (*Litchi chinensis*). *Acta Horticulturae* **773**: 201-208
- Deepak, G. P. N., Katiyar, J. P., Singh and Singh, P. C. 2008. Effect of Post-Harvest Chemical Treatments on Shelf Life and Physic Chemical Quality of Banana cv. Harichhal. *The Asian Journal of Horticulture* **3(2)**: 386-388
- dela Cruz, F. S., Gueco, L. S., Damasco, O. P., Huelgas, V. C., dela Cueva, F. M., Dizon, T. O., Sison, M. L. J., Banasihan, I. G. Sinohin, V. O. and Molina, A. B. 2008. Farmers' Handbook on Introduced and Local Banana Cultivars in the Philippines. Bioversity International
- Ding, P. and Syakirah, M. N. 2010. Influence of Fruit Bagging on Postharvest Quality of 'Harumanis' Mango (*Mangifera indica* L.). *Acta Horticulturae* **877**: 169-174
- Edirimanna, E. R. S. P., Amarathunga, D. K., Amarasena, B. G. and Kirinde, T. 2015. Effect of Bagging Materials and Bag Colour on Fruit Weight and Quality of Guava (*Pisidium guajava* L.). *Annals of Sri Lanka Department of Agriculture* **17**: 297-302
- Elkashif, M. E., Mohamed, H. A. and Elamin, O. M. 2010. Effect of Pre- and Post-Harvest Treatments on Yield and Fruit Quality of Selected Banana Cultivars. *Gezira Journal of Agricultural Science* **8(1)**: 1-12
- EPAGRI. 2002. XIV Curso de Bananicultura. Itajai
- Espanto, L. 1984. *Handling, Storage and Ripening of 'Saba'*. Bachelor of Science Thesis. University of the Philippines Los Banos
- Fan, X. and Mattheis, J. P. 1998. Bagging 'Fuji' Apples during Fruit Development Affects Colour Development and Storage Quality. *Horticultural Science* **33**: 1235-1238
- Faoro, I. D. and Marcia, M. 2004. Bagging of Nashi Pear cv. Housui. *Brazilian Magazine of Fruit Culture* **26**: 86-88
- Fatimah Corazon, A., Yap, L. V., Haryati Shila, M. W., Yasotha, S. and Shamsul, K. 2011. Peeling the Scientific Facts of Banana. Shah Alam: International Islamic Academy

- Ferguson, I., Volz, R. and Woolf, A. 1999. Preharvest Factors Affecting Physiological Disorders of Fruit. *Postharvest Biology and Technology* **15**: 255-262
- Finger, F. L., Puschmann, R. and Barros, R. S. 1995. Effects of Water Loss on Respiration, Ethylene Production and Ripening of Banana Fruit. *Brazilian Journal of Plant Physiology* **7(1)**: 115-118
- Gelido, M. E. R. A. 1986. Characterisation of the Postharvest Quality of 'Cavendish' Banana (*Musa* sp. cv. 'Umalag') from Selected Areas in Davao. Master of Science Thesis. University of the Philippines Los Banos
- George, J. B. 1987. Water Stress and Gibberellins: Effects on the Storage of Plantains. In: International Cooperation for Effective Plantain and Banana Research. *Proceedings of the 3rd Mtg.* 27 – 31 May 1985. Abidjan, Ivory Coast
- Goncalves, A. L. and Kernaghan, J. R. 2014. *Banana Production Methods: A Comparative Study*. Centro Ecologico
- Gowen, S. 1995. *Bananas and Plantains*. London: Chapman and Hall
- Haidar, J. and Demisse, T. 1999. Malnutrition and Xerophthagma in Rural Communities of Ethiopia. *East African Medicinal Journal* **76(10)**: 590-593
- Hailu, M., Workneh, T. S. and Belew, D. 2012. Effect of Packaging Materials on the Quality of Banana Cultivars. *African Journal of Agricultural Research* **7(7)**: 1226-1237
- Hailu, M., Workneh, T. S. and Belew, D. 2013. Review on Postharvest Technology of Banana Fruit. *African Journal of Biotechnology* **12(7)**: 635-647
- Harhash, M. M. and Al-Obeed, R. S. 2010. Effect of Bunch Bagging Colour on Yield and Fruit Quality of Date Palm. *American-Eurasian Journal of Agricultural and Environmental Science* **7**: 312-319
- Harris, R. S. 1975. Effects of Agricultural Practices on the Composition of Foods. In Harris, R. S., Karmas, E. (Eds.). *Nutritional Evaluation of Food Processing*. 2nd edition. Westport: AVI
- Harker, R., Redgwell, R. J., Hallett, I. C., Murray, S. H. and Carter, G. 1997. *Texture of Fresh Fruit: International Horticultural Reviews*. New York: John Wiley and Sons
- He, W. H., Wang, Q., Zhang, S. Y., Huang, X. G., Li, S. H. and Huang, C. X. 2003. Effects of Bagging and Calcium Spraying on Mineral Nutrient and Quality of 'Suli' Pear Variety. *Journal of Fruit Science* **20**: 18-21
- Health Tips and Natural Healing Benefits. 2012. SABA or Cardava Banana, Philippine Fruit. May: 10
- Hewett, E. W. 2006. An Overview of Preharvest Factors Influencing Postharvest Quality of Horticultural Products. *International Journal of Postharvest Technology and Innovation* **1(1)**: 4-15
- Hiratsuka, S., Yokoyama, Y., Nishimura, H., Miyazaki, T. and Nada, K. 2012. Fruit Photosynthesis and Phosphoenolpyruvate Carboxylase Activity as Affected by Lightproof Fruit Bagging in Satsuma Mandarin. *Journal of the American Society for Horticultural Science* **137**: 215-220
- Hofman, P. J., Smith, L. G., Joyce, D. C., Johnson, G. L. and Meiburg, G. F. 1997. Bagging of Mango (*Mangifera indica* cv. 'Keitt') Fruit Influences Fruit Quality and Mineral Composition. *Postharvest Biology and Technology* **12**: 83-91
- Hu, G., Chen, D., Li, P., Ouyang, R., Gao, F., Wang, W. and Dong, J. 2001. Effects of Bagging on Fruit Colouration and Phenylalanine Ammonia Lyase and Polyphenol Oxidase in 'Feizixiao' Litchi. *Acta Horticulturae* **558**: 273-278
- Huang, C. H., Chai, M. L., Pan, Z. M., Yu, B., Jiang, Z. M., Hu, J. L. and Teng, Y. W. 2007. Effects of Bagging on Fruit Skin Features and Quality of 'Cuiguan' Pear Cultivar. *Journal of Fruit Science* **24**: 747-751
- Hudima, M. and Stamper, F. 2011a. Bagging of 'Concorde' Pears (*Pyrus communis* L.) Influences Fruit Quality. *Acta Horticulturae* **909**: 625-630

- Hudima, M. and Stamper, F. 2011b. Effect of Fruit Bagging on Quality of 'Conference' Pear (*Pyrus communis* L.). *European Journal of Horticultural Science* **76**: 410-414
- Hussein, A. A., Abdel-Rahman, A. G. and Ahmed, R. B. 1994. Effectiveness of Fruit Bagging on Yield and Fruit Quality of Pomegranate (*Punica granatum* L.). *Annals of Agricultural Sciences* **32**: 949-957
- Israeli, V. and Lahav, E. 1986. Banana. In Mouseksi, S. P. (Eds.). *Handbook of Fruit Set and Development*. Florida: CRC Press
- Jia, H. J., Araki, A. and Okamoto, G. 2005. Influence of Fruit Bagging on Aroma Volatiles and Skin Colouration of 'Hakuho' Peach (*Prunus persica* Batsch). *Postharvest Biology and Technology* **35**: 61-68
- Jiang, Y., Joyce, D. C. and Macnish, A. J. 1999. Extension of the Shelf Life of Banana Fruit by 1-Methylcyclopropene in Combination with Polyethylene Bags. *Postharvest Biology and Technology* **16**(2): 187-193
- Johns, G. G. 1996. Effects of Bunch Trimming and Double Bunch Covering on Yield of Bananas during Winter in New South Wales. *Australian Journal of Experimental Agriculture* **36**: 229-235
- Joyce, D. C., Beasley, D. R. and Shorter, D. J. 1997. Effect of Preharvest Bagging on Fruit Calcium Levels, and Storage and Ripening Characteristics of 'Sensation' Mangoes. *Australian Journal of Experimental Agriculture* **37**: 383-389
- Ju, Z. 1998. Fruit Bagging, a Useful Method for Studying Anthocyanin Synthesis and Gene Expression in Apples. *Scientia Horticulturae* **77**: 155-164
- Ju, Z. G., Liu, C. and Yuan, Y. 1995. Activities of Chalcone Synthase and UDPGal, Flavonoid-3-O-glycosyltransferase in Relation to Anthocyanin Synthesis in Apple. *Scientia Horticulturae* **63**: 175-185
- Kader, A. A. 1988. Influence of Preharvest and Postharvest Environment on Nutritional Composition of Fruits and Vegetables. In Quebedeaux, B. and Bliss, F. A. (Eds.). *Horticulture and Human Health, Contributions of Fruits and Vegetables*. Englewood Cliffs, New Jersey: Prentice Hall
- Kader, A. A. 1999. Fruit Maturity, Ripening and Quality Relationships. *Acta Horticulturae* **485**: 203-208
- Kader, A. A. 2002. Pre- and Post-Harvest Factors Affecting Fresh Produce Quality, Nutritional Value and Implications for Human Health. *Proceedings of the International Congress Food Production and the Quality of Life*. 4-8 September 2000, Sassari, Italy. 109-119
- Karamura, D. A. 1998. *Numerical Taxonomic Studies of the East African Highland Bananas (Musa AAA-East Africa) in Uganda*. Doctoral Thesis. University of Reading
- Kays, S. J. 1999. Preharvest Factors Affecting Quality. *Postharvest Biology and Technology* **15**: 233-247
- Kim, Y. H., Kim, H. H., Youn, C. K., Kweon, S. J., Jung, H. J. and Lee, C. H. 2008. Effects of Bagging Material on Fruit Colouration and Quality of 'Janghowon Hwangdo' Peach. *Acta Horticulturae* **772**: 81-86
- Klein, B. P. and Perry, A. K. 1982. Ascorbic Acid and Vitamin A Activity in Selected Vegetables from Different Geographical Areas of the United States. *Journal of Food Science* **47**: 941-945
- Kulkarni, S. G., Kudachikar, V. B. and Prakash, M. N. K. 2010. Studies on Physico-Chemical Changes during Artificial Ripening of Banana (*Musa* sp.) Variety 'Robusta'. *Journal of Food Science and Technology* **48**(6): 730-734
- Kutinyu, R. 2014. *The Evaluation of Different Banana Bunch Protection Materials on Selected Banana Cultivars for Optimum Fruit Production and Quality in Nampula Province, Mozambique*. Master of Science Dissertation. University of South Africa

- Kwan, K. D., Soo, C. D., Sik, K. E., Hyuan, H. K., Ho, L. K., Sik, K. K. and Cheol, L. K. 2000. Fruit Quality of Yuzu (*Citrus junos* L.) as Influenced by Bagging Time and Materials of Bagging Treatment. *Journal of the Korean Society for Horticultural Science* **41**: 190-193
- Lee, S. K. and Kader, A. A. 2000. Preharvest and Postharvest Factors Influencing Vitamin C Content of Horticultural Crops. *Postharvest Biology and Technology* **20**: 207-220
- Lin, J., Chang, Y., Yan, Z. and Li, X. 2008. Effects of Bagging on the Quality of Pear Fruit and Pesticide Residues. *Acta Horticulturae* **772**: 315-318
- Lin, J., Wang, J. H., Li, X. J. and Chang, Y. H. 2012. Effects of Bagging Twice and Room Temperature Storage on Quality of 'Cuiguan' Pear Fruit. *Acta Horticulturae* **934**: 837-840
- Liu, Y. J., Xu, J. H., Zhang, Z. H. Jiang, J. M. and Yu, D. 2004. Effects of Different Paper Bags on Fruit Quality of Loquat. *Acta Agriculturae Universitatis Jiangxiensis* **26**: 334-337
- Loesecke, V. 1950. Some Aspects of Physico-Chemical Changes in Ripening Bananas during Ripening in Storages. *Progressive Horticulture* **14(1)**: 79-84
- Lopez, A. 1998. Bananas and Plantain. Corbana, Corporacion Bananera Nacional. San Jose, C. R.
- Lustre, A. O., Soriano, M. S., Morga, N. S., Balagot, A. H. and Tunac, M. M. 1976. Physico-Chemical Changes in 'SABA' Bananas during Normal and Acetylene-Induced Ripening. *Food Chemistry* **1**: 125-132
- MARDI. 2011. Status of Distribution, Damage and Mitigation of Bacterial Wilt in Malaysia. In: Horticulture Research Centre. Serdang.
- Marin, D. H., Blankenship, S. M., Sutton, T. B. and Swallow, W. H. 1996. Physiological and Chemical Changes during Ripening of Costa Rican Bananas Harvested in Different Seasons. *Journal of the American Society for Horticultural Science* **121(6)**: 1157-1161
- Marriott, J. 1980. Banana-Physiology and Biochemistry of Storage and Ripening for Optimum Quality. *Critical Reviews in Food Science and Nutrition* **13(1)**: 41-88
- Mattheis, J. P. and Fellman, J. K. 1999. Preharvest Factors Influencing Flavour of Fresh Fruit and Vegetables. *Postharvest Biology and Technology* **15**: 227-232
- Mohapatra, A., Yuvraj, B. K. and Shanmugasundaram, S. 2016. Physicochemical Changes during Ripening of Red Banana. *International Journal of Science, Environment and Technology* **5(3)**: 1340-1348
- Mohapatra, D., Sabayasachi, M. and Namrata, S. 2010a. Banana and its By-Products Utilisation: An Overview. *Journal of Scientific and Industrial Research* **69**: 323-329
- Mohapatra, D., Sabyasachi, M. and Namrata, S. 2010b. Banana Postharvest Practices: Current Status and Future Prospects – A Review. *Agricultural* **31(1)**: 56-62
- Mostafa, R. A. A., El-Salhy, A. M., El-Banna, A. A., and Diab, Y. M. 2014. Effect of Bunch Bagging on Yield and Fruit Quality of Seewy Date Palm under New Valley Conditions (Egypt). *Middle East Journal of Agriculture Research* **3**: 517-521
- Mrema, C. G. and Rolle, S. R. 2002. Status of the Postharvest Sector and its Contribution to Agricultural Development and Economic Growth. *Proceeding of the 9th JIRCAS International Symposium (JIRCAS-08)*. Value-Addition to Agricultural Products. Ibaraki, Japan. 13-20
- Muchui, M. N., Mathooko, F. M., Njoroge, C. K., Kahangi, E. M., Onyango, C. A. and Kimani, E. M. 2010. Effect of Perforated Blue Polyethylene Bunch Covers on Selected Postharvest Quality Parameters of Tissue-Cultured Bananas (*Musa* spp.) cv. Williams in Central Kenya. *Journal of Stored Products and Postharvest Research* **1(3)**: 29-41

- Munasque, V. S., Abdullah, H., Gelido, M. E. R. A., Rohaya, M. A. and Zaipun, M. Z. 1990. Fruit Growth and Maturation of Banana. In Hassan, A. and Pantastico, E. B. *Banana Fruit Development, Postharvest Physiology, Handling and Marketing in ASEAN*.
- Murray, X. J., Holcroft, D. M., Cook, N. C. and Wand, S. J. E. 2005. Postharvest Quality of 'Laetitia' and 'Songold' (*Prunus salicina* Lindell) Plums as Affected by Pre-harvest Shading Treatments. *Postharvest Biology and Technology* **37**: 81-92
- Nagaharshitha, D., Khopkar, R. R., Haldankar, P. M., Haldavanekar, P. C. and Parulekar, Y. R. 2014. Effect of Bagging on Chemical Properties of Mango (*Mangifera indica* L.) cv. Alphonso. *Agrotechnology* **3(1)**: 1-4
- Nagaraju, C. G. and Reddy, T. V. 1995. Deferral of Banana Fruit Ripening by Cool Chamber Storage. *Advances in Horticultural Science* **9**: 162-166
- Nakasone, H. Y. and Paull, R. E. 1999. Tropical Fruits. UK by Biddles Ltd, Guildford and King's Lynn: CAB International
- Nelson, S. C., Ploetz, R. C. and Kepler, A. K. 2006. *Musa* species (Bananas and Plantains). In: Elevitch, C. R. (Eds.). *Species Profiles for Pacific Island Agroforestry*. Hawaii: Permanent Agriculture Resources (PAR)
- Ni, Z., Zhang, Z., Gao, Z., Gu, L. and Huang, L. 2010. Effects of Bagging on Sugar Metabolism and the Activity of Sugar Metabolism Related Enzymes during Fruit Development of 'Qingzhong' Loquat. *African Journal of Biotechnology* **10**: 4212-4216
- Nik Hassan, N. M. M. 2003. Banana R&D in Malaysia: Updates and Highlights. In: Molina, A. B., Eusebio, J. E., Roa, V. N., Van Den Bergh, I., Maghuyop, M. A. G. and Borromeo, K. H. (Eds.). *Advancing Banana and Plantain R&D in Asia and the Pacific. Proceedings of the Second BAPNET Steering Committee Meeting*. 2003. Jakarta: IDN. 75-79
- OGTR. 2008. The Biology of *Musa* L. (Banana). In: Department of Health and Ageing (Australia).
- Olayemi, F. F., Adegbola, J. A., Bamishaiye, E. I. and Awagu, E. F. 2012. Assessment of Post Harvest Losses of Some Selected Crops in Eight Local Government Areas of Rivers State, Nigeria. *Asian Journal of Rural Development* **2(1)**: 13-23
- Pantastico, Er. B. (eds.). 1975. *Postharvest Physiology, Handling and Utilisation of Tropical and Sub Tropical Fruits and Vegetables*. AVI Publishing, Westport, CT.
- Paull, R. E. 1996. Ethylene, Storage and Ripening Temperatures Affect Dwarf Brazilian Banana Finger Drop. *Postharvest Biology and Technology* **8(1)**: 65-74
- Ping, L. I., Zheng, R. Q., Wen, H. L., Chen, W. G., Wu, Y. J, and Luo, S. 2003. Effect of Bagging on Pigments and Total Phenol in Xinshiji Guava Fruit Skin. *Journal of Fruit Science* **20(2)**: 120-123
- Proctor, J. T. A. and Loughheed, E. C. 1976. The Effect of Covering Apples during Development. *HortScience* **11**: 108-109
- Purseglove, J. W. 1972. *Tropical Crops, Monocotyledons*. Volume 2. London: Longmans
- Quisumbing, E. C. (eds.). 1988. The Philippine Banana and Mango Industries. *Proceedings of National Workshop-Consultation on Pre- and Post-harvest Technologies of Banana and Mango*. 19 – 20 November 1987. Laguna, Philippine
- Rathore, H. A., Masud, T., Sammi, S. and Soomro, A. H. 2007. Effect of Storage on Physico-Chemical Composition and Sensory Properties of Mango (*Mangifera indica* L.) Variety Dosehari. *Pakistan Journal of Nutrition* **6**: 143-148
- Ritenour, M., Schrader, L., Kammereck, R., Donahue, R. and Edwards, G. 1997. Bag and Liner Colour Greatly Affect Apple Temperature under Full Sunlight. *HortScience* **32**: 272-276
- Reddy, S. A. 1989. Effect of Bunch Covers on Bunch Maturity and Fruit Size in High Density Robusta Banana Orchards. *The Journal of Research APAU* **17**: 81-82

- Robinson, J. C. 1996. *Bananas and Plantains*. Wallingford: CAB International
- Robinson, J. C. and Nel, D. 1984. Banana Bunch Covers Effective in Winter. Nelspruit, South Africa. Information Bulletin Citrus and Subtropical Fruit Research Institute 138, pp. 5-6
- Robinson, J. C. and Saucó, V. G. 2011. *Bananas and Plantains*. 2nd edition. Cambridge: CAB International
- Rodrigues, M. G. V., Dias, M. S. C., Ruggiero, X. C. and Lichtemberg, L. A. 2008. Planejamento, Implantacao e Manejo do Bananal. *Informe Agropecuario* **29(245)**: 14-24
- Rodrigues, M. G. V., Souto, R. F. and Menegucci, J. L. P. 2001. Influence of Polyethylene Banana Bunch Cover for Irrigated Banana Tree in the North of Minas Gerais State. *Revista Brasileira de Fruticultura* **23**: 559-562
- Seymour, G. B., Taylor, J. E. and Tucker, G. A. 1993. *Biochemistry of Fruit Ripening*. In Seymour, G. B. (Eds.). London: Chapman and Hall
- Sharma, R. R., Pal, R. K., Asrey, R., Sagar, V. R., Dhiman, M. R. and Rana, M. R. 2013. Pre-harvest Fruit Bagging Influences Fruit Colour and Quality of Apple cv. Delicious. *Agricultural Sciences* **4**: 443-448
- Shewfelt, R. L. 2009. Measuring Quality and Maturity. In Florkowski, W. J., Shewfelt, R. L., Brueckner, B. and Prussia, S. E. (Eds.). *Postharvest Handling – A System Approach*. London: Academic Press
- Shewfelt, R. L. and Prussia, S. E. 1993. *Postharvest Handling, A Systems Approach*. USA: Academic Press Limited
- Signes, A. J., Burlo, F., Martinez-Sanchez, F. and Carbonell-Barrachina, A. A. 2007. Effects of Pre-harvest Bagging on Quality of Black Table Grapes. *World Journal of Agricultural Sciences* **3**: 32-38
- Simmonds, N. W. and Shepherd, K. 1955. The Taxonomy and Origins of the Cultivated Bananas. *Journal of the Linnaean Society London, Botany* **55**: 302-312
- Singh, B. P., Singh, R. A., Singh, G. and Killadi, B. 2007. Response of Bagging on Maturity, Ripening and Storage Behaviour of Winter Guava. *Acta Horticulturae* **735**: 597-601
- Snelgar, W. P., Hopkirk, G., Seelye, R. J., Martin, P. J. and Manson, P. 1998. Relationship between Canopy Density and Fruit Quality in Kiwifruit. *New Zealand Journal of Crop and Horticultural Science* **26**: 223-232
- Stover, R. H. and Simmonds, N. W. 1987. *Bananas*. 3rd edition. Essex: Longman Scientific and Technical
- Teixeira, R., Amarante, C. V. T. D., Boff, M. I. C. and Ribeiro, L. G. 2011. Control of Insect Pests and Diseases, Maturity and Quality of 'Imperial Gala' Apples Submitted to Bagging. *Brazilian Magazine of Fruit Culture* **33**: 394-401
- Tigist, M., Workneh, T. S., and Woldetsadik, K. 2011. Effects of Variety on the Quality of Tomato Stored under Ambient Conditions. *Journal of Food Science and Technology* **50(3)**: 477-486
- Thompson, A. K. (eds.). 1996. *Postharvest Treatments in Postharvest Technology of Fruit and Vegetables*. Oxford: Blackwell Publishing
- Tustin, D. S., Cashmore, W. M. and Bensley, R. B. 2001. Pomological and Physiological Characteristics of Slender Pyramid Centre Leader Apple (*Malus domestica*) Planting Systems Grown on Intermediate Vigour, Semi-Dwarfing and Dwarfing Rootstocks. *New Zealand Journal of Crop and Horticultural Science* **29**: 195-208
- Tyas, J. A., Hoffman, P. J., Underhill, S. J. R. and Bell, K. L. 1998. Fruit Canopy Position and Panicle Bagging Affects Yield and Quality of 'Tai So' Lychee. *Scientia Horticulturae* **72**: 203-213
- Ulrich, R. 1970. Organic Acids. In Hulme, A. C. (Eds.). *The Biochemistry of Fruit and Their Products*. New York: Academic Press

- Valmayor, R. V., Espino, R. R. C. and Pascua, O. C. 2002. The Wild and Cultivated Bananas of the Philippines. Los Banos, Laguna. PARFFI and BAR.
- Vezina, A. 2016. Bagging. <http://www.promusa.org/Bagging#Colour>. Access on 10 November 2016. Verified on 17 November 2016
- Wang, K. H., Kepler, A. K. and Hooks, C. R. R. 2009. Brief Description of Banana Cultivars Available from the University of Hawaii Seed Program.
- Wang, S. M., Gao, H. J. and Zhang, X. B. 2002. Effects of Bagging on Pigment, Sugar and Acid Development in 'Red Fuji' Apple Fruit. *Acta Horticulturae Sinica* **29**: 263-265
- Watanawan, A., Watanawan, C. and Jarunate, J. 2008. Bagging 'Nam Dok Mai #4' Mango during Development Affects Colour and Fruit Quality. *Acta Horticulturae* **787**: 325-328
- Wills, R. B. H., Lim, J. S. K. and Greenfield, H. 1984. Changes in Chemical Composition of Cavendish Banana (*Musa accuminata*) during Ripening. *Journal of Food Biochemistry* **8**: 69-77
- Xia, J., Zhang, Z., Qu, S. C., Xu, C. C. and Gao, J. J. 2009. Effects of Bagging on the Quality Factors of Jiang Su 'Red Fuji' Apple in the Process of Growth and Development. *Jiangsu Journal of Agricultural Science* **25**: 351-356
- Xin, H. M. and Zhang, X. H. 2003. Influence of Bagging on the Fruit Inclusion and Endogenous Hormones of 'Yali' Pear Variety. *Journal of Fruit Science* **20**: 233-235
- Xu, H. X., Chen, J. W. and Xie, M. 2010. Effect of Different Light Transmittance Paper Bags on Fruit Quality and Anti-Oxidant Capacity in Loquat. *Journal of the Science of Food and Agriculture* **90**: 1783-1788
- Yang, W. H., Zhu, X. C., Bu, J. H., Hu, G. B., Wang, H. C. and Huang, X. M. 2009a. Effects of Bagging on Fruit Development and Quality in Cross-Winter Off-Season Longan. *Scientia Horticulturae* **120**: 194-200
- Yang, X. T., Zhang, Z. Q., Joyce, D., Huang, X. M., Xu, L. Y. and Pang, X. Q. 2009b. Characterisation of Chlorophyll Degradation in Banana and Plantain during Ripening at High Temperature. *Food Chemistry* **114**: 383-390
- Zhen, G. H., Liao, W. C. and Fan, W. M. 2000. Effects of Bag Materials and Bagging Dates on Loquat Fruits. *Fujian Fruits* **114**: 1-4
- Zhou, X. B. and Guo, X. W. 2005. Effects of Bagging on the Fruit Sugar Metabolism and Invertase Activities in 'Red Globe' Grape during Fruit Development. *Journal of Fruit Science* **26**: 30-33
- Zhou, J., Zhong, G., Lin, Z. and Xu, H. L. 2012. The Effects of Bagging on Fresh Fruit Quality of *Canarium album*. *Journal of Food Agriculture and Environment* **10**: 505-508